

Escape to **TAMBORINE MOUNTAIN** *GOLD COAST HINTERLAND*



Visitor Guide

things to do
where to stay
what to explore
food & drink



EscapeToTamborineMountain.com.au
in the Scenic Rim



Escape to your Hinterland – Tamborine Mountain

Disappear into the cooler, green rainforests of Tamborine Mountain and surrounds. The mountain climate makes for an ideal escape from the heat of the coast. Because of its altitude, Tamborine Mountain has a much cooler and less humid climate than the Gold Coast & Brisbane, situated high on the Mountain plateau.

Wander the walking trails, discover the hidden delights of eclectic boutique shops, and visit the wineries, breweries and distilleries on offer. You can find locally made clothing and jewellery, ceramics, gemstones, and local/ Indigenous art. There's lots of fresh local produce like coffee, flowers, honey, as well as organic avocado and rhubarb to purchase.

Explore the rainforests and national parks on foot, with a choice of more strenuous hikes on offer. The waterfalls are at their best during the wet season.

Tamborine Rainforest Skywalk will take you high above the rainforest canopy, the Glowworm Cave will show you the mysteries of nature. Discover Mountain-inspired beer, wine and gins, and locally grown coffee. Sit and enjoy great food or simply wander down the famous Gallery Walk.

Discover more of this charming Mountain, just an hour south of Brisbane, nestled in the Gold Coast Hinterland. *Come up and stay awhile!*

	Attractions	3 – 10
	Eating Out	11 – 15
	Tours and Transport	16
	Wellness	17 – 18
	Art Galleries, Antiques, Books, Studios	18
	Main Street	19 – 20
	TAMBORINE MOUNTAIN MAP - CENTREFOLD	21 – 24
	Gallery Walk	25 – 27
	Wineries / Distilleries / Breweries	28 – 29
	Things to do, Bottle shops	30
	Accommodation	31
	Canungra - discover our neighbours	32-33
	Markets	34
	Weddings	35
	Waterfalls	36
	Lookouts	37
	BBQs / Parks / Playgrounds	38 – 39
	Tamborine Mountain Walking Trails	40 – 43

D5 2



TAMBORINE MOUNTAIN DISTILLERY

EST. 1993

QUEENSLAND'S OLDEST CRAFT DISTILLERY

With over 350 awards, we invite you to explore our distillery nestled amidst the rainforest in our iconic building, offering an immersive experience like no other.



- Liqueur & Spirit Tastings
- Cocktail Bar
- Grazing Platters
- Distillery Tours
- Masterclasses
- Live Music
- Events
- Gifts



10 MACDONNELL RD
TAMBORINE MOUNTAIN
(07) 5545 3452

Open 7 days a week
from 10am till 5pm

BOOK ONLINE

www.TamborineMountainDistillery.com



EscapeToTamborineMountain.com.au



St Bernard's Hotel

101 Alpine Terrace, Tamborine Mountain QLD 4272

☎ (07) 5545 1177 ✉ admin@stbernardshotel.com.au

🌐 <https://stbernardshotel.com.au/>



'Where every celebration feels elevated'

- Built in 1881 this historic hotel has magnificent views
- Beautiful gardens and 'Olde World' ambience
- Home to Cooper and Norman, our resident Saint Bernard dogs
- Perfect venue for weddings and functions
- Plenty of outdoor seating to enjoy the stunning views of the Gold Coast
- Restaurant open for lunch and dinner 7 days a week, & Breakfast on Saturday Sunday

CANUNGRA HOTEL

Cold beer, great food, good friends



18 Kidston Street, Canungra QLD 4275

☎ (07) 55435 233 ✉ administration@canungrahotel.com.au

🌐 <https://www.canungrahotel.com.au/>



OPEN 7 DAYS A WEEK FROM 10AM

- Accommodation
- Restaurant open lunch & dinner
- Gaming
- Bar
- Bottleshop
- Beer Garden

Explore the rainforest in a different & thrilling way.



- Spectacular Elevated Rainforest Canopy Walk & Skywalk Cantilever
- Eco Centre
- The Birdwing Café • Gift Shop • Parking.

Open Every Day (Except Christmas Day)

9.30am to the last walk at 4.00pm (closed at 5pm).

Suitable walking shoes recommended.



tamborine rainforest
Skywalk



333 Geissmann Drive (becomes Tamborine Mt Rd), North Tamborine, Queensland 4272.

Phone: 07 5545 2222

www.rainforestskywalk.com.au

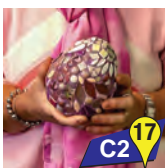


TAMBORINE GLASS BLOWING

Classes & Gallery

GLASS BLOWING • GLASS MOSAICS
TORCHWORK • GLASS FUSING

We offer a range of unique and exciting classes that allow you to explore your artistic side and craft stunning glass pieces.



www.tamborineglassblowing.com.au

AUSTRALIAN OUTBACK OPALS



D5 79



1 Eagle Heights Road
Tamborine Mountain
OutbackOpals.com.au
(07) 5545 0888

APPOINTMENTS RECOMMENDED



German Cuckoo Clock Nest

A true icon on Gallery Walk... Explore the largest selection of Cuckoo Clocks, Watches, Grandfather Clocks, Wall & Mantel Clocks, Contemporary & Nostalgic Timepieces. Discover a unique range of German souvenirs, including Beer Steins, Christmas Decorations, Traditional Keepsakes. Open 7 Days till 4pm.

143 Long Road "Gallery Walk"
(07) 5545 1334
Clocks.com.au

D6 6

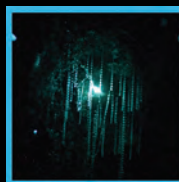


DAYTIME GLOW WORM TOURS

A CONSERVATION INITIATIVE

EVERYDAY FROM 10am

CHECK WEBSITE FOR TOUR DEPARTURE TIMES



BOOK
ONLINE NOW
TO SECURE
YOUR SPOT



CEDAR
CREEK
ESTATE

CEDAR CREEK ESTATE

104 Hartley Rd Tamborine Mountain
QLD 4272 Australia Phone (07) 5545 1666
WWW.TAMBORINEGLOWWORMS.COM.AU



GLOW WORM TOURS

Cedar Creek Estate 104 Hartley Road,
Tamborine Mountain Qld 4272 ☎ (07) 5545 1666

✉ glowworms@cedarcreekestate.com.au

🌐 tamborineglowworms.com.au

Come with us on a guided glow worm tour...

Through our purpose-built cave filled with thousands of glowing glow worms! Over the course of a 30 minute guided tour, you'll see glow worms up close and learn all about their life cycle and behaviour. Tour tickets can be purchased online. Open daily from 10am with café on-site for dine-in and take aways.

F4 47





Gold Coast MOTOR MUSEUM

A8 111



07 5560 2345

Museum Hours: Mon-Tues: Closed
Wed-Fri: 9am-4pm | Sat-Sun: 8am-5pm

107 Kriedeman Rd, Upper Coomera, QLD, 4209

WWW.GCMM.COM.AU



Fox and Hounds Country Inn

Authentic British Ales and an interior imported all the way from the UK, this cosy pub truly is the Englishman's home away from home. Traditional English food like Toad in the Hole, Beef and Guinness Pie, weekend Roasts and Yorkshire Pudding.
Mon-Thurs: 11AM-3PM re-open 5PM-9PM
Fri-Sun: 11AM-9PM

7 Elevation Drive, Wongawallan Qld 4210

(07) 4801 7303 FoxAndHounds.net.au



A8 110



WINE DINE PLAY & STAY



HAMPTON
ESTATE WINES

52 Bartle Road, Tamborine Mt

Phone 0482 170 577

hamptonestatewines.com.au

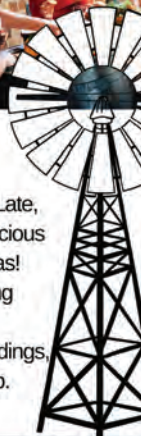


BEARDED DRAGON HOTEL

A2 76

BEARDED DRAGON HOTEL

Stop by Tamborine's Favourite Pub in the Paddock!
Serving up Casual All Day Dining 7 days from Breakfast til Late, Chef's Desserts and Blackboard Specials. Live Music, Delicious Cocktails, Local Beer Tastings, Meet our Donkeys & Alpacs!
A true blue Aussie experience, chock-a-block with interesting antiques and old world memorabilia and charm.
Accommodation Stay & Play packages, Room Service, Weddings, Celebrations & Corporate Events, Take-away & Bottle-shop.
Look out for the Big 1920's Vintage Windmill!



2-22 Tamborine Mountain Rd Tamborine

(07) 5543 6888

events@beardeddragon.com.au

www.beardeddragon.com.au

[@beardeddragonhotel](https://www.facebook.com/beardeddragonhotel)



OPEN 7 DAYS

M1 107

MOUNTVIEW ALPACA FARM



mountviewfarm.com.au

@ O'REILLY'S VINEYARD • 0490 973 865

852 LAMINGTON NATIONAL PARK RD, CANUNGRA.

WALK AN ALPACA
ALPACA PICNICS
FARMHOUSE BNB



ATTRACTIONS



Play golf on lush, undulating fairways and smooth bent grass greens.

Visitors welcome, hire carts and clubs available.

07 5545 1788

5 Coomera Gorge Drive, Tamborine Mountain QLD
www.tamborinemountaingolfclub.com

K5 92



TAMBO PIES

Shop 4
140 Long Road
Tamborine Mountain

Shop 1
23 School Road
Tamborine Mountain



J4 90

Granny Macs Fudge Store & Café

*Fudge, confections, Preserves,
Ice Cream, Souvenirs...*

Over 60 flavours – ongoing New and limited flavours including Vegan and Adult flavours of our famous fudge, made in store. Confections of yesteryear from UK, USA & Dutch. Order online – fudge gift boxed and mailed worldwide.



139 Long Road "Gallery Walk"

hello@grannymacs.com (07) 5545 1999

GrannyMacs.com

D6 6

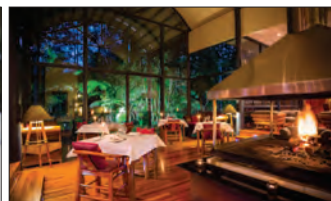
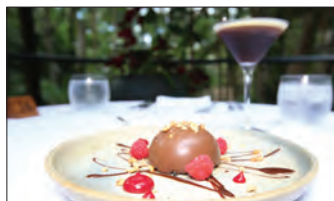
PETHERS

RAINFOREST RETREAT



BOOKINGS 5545 4577
www.pethers.com.au

C3 32



Restaurant is now open for dinner on
Thursday, Friday and Saturday nights

BOOKINGS ESSENTIAL

28B Geissmann St, Tamborine Mountain

The Ultimate Romantic Retreat



C3 32

PETHERS RAINFOREST RETREAT

A hidden gem set in 5 hectares of private rainforest and yet just a few minutes from cafés and shops. Spoil yourself. Relax and unwind in one of our 10 spacious treehouses, each with its own double spa, lounge, dining area, kitchenette and 5-metre high glass windows, or our newly renovated 4-bedroom house with its own fireplace and huge wrap-around balcony. Don't miss our renowned restaurant - superb setting and cuisine. Scan the code for bookings.



28B Geissmann Street, Tamborine Mountain QLD 4272
(07) 5545 4577 retreat@pethers.com.au

www.pethers.com.au



Enjoy your meal... Tamborine Mountain is home to many wonderful eateries, catering for all budgets and tastes. Fresh local produce grown in rich volcanic soils, prepared with care and skill is the secret to your culinary delights. Pubs and bistros, take-aways and pizza kitchens, cafes and health food stores, restaurants and cake shops all invite you to enjoy the delicious things life has to offer.

D3 36



HICKORY SLOW
SMOKED BBQ MEATS

www.hickoryslow.com.au 07 5677 6604



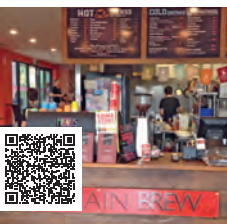
TAMBORINE MOUNTAIN BAKERY

Old-style Bakery,
est. 1924

Wide selection of interesting breads, a large variety of pies, pastries and tarts, fantastic croissants and cakes, including made-to-order.



📍 28 Main Street,
North Tamborine
☎ 0481 128 370



The Mountain Brew Coffee

Great Coffee, Great Vibes... Excellent tasting coffee made from the freshest premium beans and always served with a smile. We also offer yummy gourmet breakfast and lunch including daily Asian Specials. Try our delicious cakes! Open Mon-Sat 7am to 4pm and Sun and Public Holidays 7am to 3pm.

📍 1/18 Main Street, Tamborine Mountain
☎ (07) 5545 1186
🌐 www.themountainbrewco.com.au



Belvedere Restaurant
Since 1925 on Main Street
Classic Italian at its best!

Authentic Italian Chef Mario from ROMA welcomes you... Open: Tue to Sun
Lunch: 11am-3pm – Fri + Sat + Sun
Dinner: Tue – Sat (Closed Sunday)
Home made pasta and wood-fired pizza.
Traditional Italian menu at its best!

📍 96 Main Western Rd, Tamborine Mountain
☎ 07 5545 4063

📱 [Facebook](https://www.facebook.com/belvedere.restaurant)



TAMBORINE
MOUNTAIN
COFFEE
PLANTATION

COFFEE - KITCHEN - BAR



HISTORIC St Bernard's HOTEL

J3 65





St Bernard's Hotel

101 Alpine Terrace, Tamborine Mountain QLD 4272

☎ (07) 5545 1177 ✉ admin@stbernardshotel.com.au
🌐 <https://stbernardshotel.com.au/>



'Where every celebration feels elevated'

- Built in 1881 this historic hotel has magnificent views
- Beautiful gardens and 'Olde World' ambiance
- Home to Cooper and Norman, our resident Saint Bernard dogs
- Perfect venue for weddings and functions
- Plenty of outdoor seating to enjoy the stunning views of the Gold Coast
- Restaurant open for lunch and dinner 7 days a week, & Breakfast on Saturday Sunday

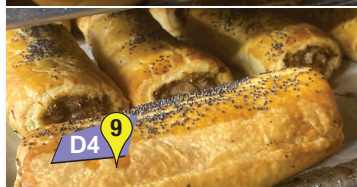
CEDAR
CREEK
ESTATECOFFEE • CAKES • SNACKS • LUNCH
Open seven days – 10am to 3pmCEDAR CREEK ESTATE RESTAURANT CAFÉ
104 Hartley Road, Tamborine Mountain

Phone: 5545 1666

www.cedarcreekestate.com.au

D3 101

F4 47

**TAMBO
PIES**Shop 4
140 Long Road
Tamborine Mountain

D4 9

Shop 1
23 School Road
Tamborine Mountain**EAGLE HEIGHTS**

HOTEL

Enjoy Our
SPECTACULAR VIEWS

- Accommodation
- Bar and Bistro
- Gaming
- Bottle shop
- Events and Parties
- Breakfast Sat and Sun 8am
- Panoramic views
- Families welcome!
- Courtesy Bus

A8 1

EAGLE HEIGHTS HOTEL

1683 Tamborine Oxenford Rd, Tamborine Mountain

Phone (07) 5545 3388 Open 10am Daily

eagleheightshotel.com.au info@eagleheightshotel.com.au



FOLLOW US

**EAGLE HEIGHTS BAKERY**

25 Southport Ave, Eagle Heights



eagleheightsbakery

D6 82

Open 7 days - 9.30-5pm
(including public holidays)
21 year-old sourdough,
30 different breads & flours**5545 4011**

Serving the community for 40 years

Open
from 9.30am to 5pm
7 days a week**STANLEYS BARN**

RESTAURANT & BAR



A8 111

07 5560 2345Stanley's Restaurant: Mon-Tues: Closed
Wed-Thurs: 8:30am-4pm | Fri: 8:30am-9pm
Sat: 7:30am-9pm | Sun: 7:30am-5pm

107 Kriedeman Rd, Upper Coomera, QLD, 4209

WWW.GCMM.COM.AU**CLUB TAMBORINE**

D3 39

BAR & RESTAURANT

CLUB OPEN 7 DAYS FROM 10:00AM

RESTAURANT OPEN: WEDNESDAY ~ SUNDAY
GAMING ~ TAB ~ KENO ~ BOWLS ~ CROQUET

6-12 BEACON RD, TAMBORINE MTN 07 5545 1308



BOS TOURS



Private Driver \$999–\$1350

Call Tania 0412 988 846

to secure this great deal today or
www.bostours.au for join us tours
and up to date availability.



HOP-ON HOP-OFF TAMBORINE MOUNTAIN

- From Brisbane and Gold Coast
- Hop on Hop off Service
- Private Transfers available
- Visits each venue on demand
- Create your own adventure with Hop-on Hop-Off



BOOK
HOP-ON
HOP-OFF



www.pineappletoours.com.au +61 466 331 232

Tamborine Mountain

Explore • Taste • Discover • Repeat

Daily Departures from Brisbane & Gold Coast with Hop-on Hop off



Wine
Walks
Waterfalls
Wildlife
Wonder



BOOK A
DAY TOUR



Create your own adventure with Hop-on Hop-off

www.pineappletoours.com.au

+61 466 331 232

Relax and rejuvenate on Tamborine Mountain...

The perfect location to unwind, relax and treat yourself. An ideal complement to the natural attractions and activities to be had, treat yourself to a day spa, massage or a wonderful range of offerings.



Getaway
DAY SPA

Spa Pamper Packages

Spa | Steam Room | Infrared Sauna
Ice Plunge | Mineral Pool | Spa Jet Capsule
Massage & Luxury Spa Pedicure chairs
Float Tanks

Treatment Menu

Massage | Hot Stone Massage
Pure Fiji Body Treatments | Waterlily Facials
Japanese Head Spa | Manicures and Pedicures
Treatment Packages from 2 hrs to 4.5 hours



07 5545 4751



16 West Rd
Tamborine Mountain



Getaway Day Spa

Open 7 days from 9am to 5pm
for Spa Pamper Packages and Treatments

Open 7 days from 9am to 8pm

for private Spa Facilities and Float Tank bookings



The Escarpment Retreat

Set on four acres of beautiful rainforest and gardens with an abundance of wildlife. Guanaba natural spring flows alongside our property, and the Escarpment views offer a sense of relaxation and calm. Featuring couples only chalet-style villas, Edge house accommodation with private views of the Escarpment 'Sleeping up to six adults', and an award winning day spa.



123 Alpine Terrace,
Mount Tamborine, QLD
0419 839 165

www.escarpment.com.au



EXPERIENCE HOLISTIC BEAUTY & WELLNESS

Jasmin Organics & Zen One Wellness Retreat

Indulge in our certified organic skincare and rejuvenating wellness services:

- Boutique Skincare Products
- Wellness Seminars
- Wedding Venue Hire
- Yoga & Qigong Sessions
- Therapeutic Massages
- Accommodation

Contact Us:
(07) 5545 2006

www.jasminorganics.com

Scan the QR code for more information and bookings.



ZEN ONE
WELLNESS RETREAT



E5 99



ART GALLERIES & STUDIOS



UNDER THE
GREENWOOD TREE



Independent Bookshop and Contemporary Art Gallery

A carefully curated collection of new books and art by local and Queensland artists. Author events and regular exhibitions.

Open 10am – 4.30pm every day except Tuesdays.

Orders welcome. Gift Vouchers available.

D3 36

Main Street Marketplace, Shop 4 / 1-3 Main Street, Tamborine Mountain

☎ 0424 586 066

📘 MtTamborineBooksArt

✉ janenegardner@gmail.com

📱 [greenwoodtreebooksart](https://www.instagram.com/greenwoodtreebooksart)



Chocolates on Gallery Walk — A huge range of Australian handmade chocolates. Chocolate-coated favourites: macadamias, blueberries, strawberries, pretzels, coffee beans. Delectable hot chocolate, old fashioned milkshakes & quality coffee. Custom gift boxes, bonbonnières and all things chocolate.

📷 [chocolatesongallery](https://www.instagram.com/chocolatesongallery) 📘 [chocolatesongallerywalk](https://www.facebook.com/chocolatesongallerywalk)

📍 119 Long Rd (Gallery Walk), Eagle Hts D6 4 ☎ 07 5545 0548



Fudge Heaven

40 flavours of fudge, assorted liquorice and Golden North ice cream available. Amazing Fudge with Free tastings every day (NB: can depend on how busy we are)

Mon – Fri 10–4 Sat and Sun 9–5

📍 130 Long Road, "Gallery Walk"

☎ 0417 411 680

📘 [facebook.com/fudgeheavenau](https://www.facebook.com/fudgeheavenau)

D6 7



Eighty8 Interior Designs

Local, handmade lampshades, cushions. Art, decor candles and design services.

📍 Long Rd, "Gallery Walk"

Tamborine Mountain

☎ 0422 079 009

📘 www.eighty8interiordesigns.com.au



D6 9



Franquette

"Without any fuss..." The home of artisan bread, pastries, gourmet sandwiches and specialty items. Franquette brings traditional French-style baguettes and baked goods to Tamborine Mountain.

📍 155 Long Road "Gallery Walk"

📘 [instagram: franquette_bakery](https://www.instagram.com/franquette_bakery)

D6 8



Cinnamon Bun Café

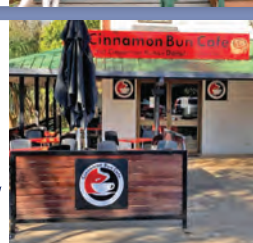
Freshly made on premises – amazing CINNAMON BUNS, sweet Coffee Glaze, Cinnamon Apple & Glaze, Segafredo Coffee. How about a delicious OUTBACK Pie. Also yummy fresh DONUTS & CHURROS with cinnamon sugar cooked to order. Perfect to go with your Favourite cuppa of Segafredo coffee. Open 10am – 4pm Mon to Fri and 9am – 5pm Sat & Sun.

📍 134 Long Road "Gallery Walk"

☎ 0417 411 680

📘 [facebook.com/Cinnamon-Bun-Cafe-101779614973918/](https://www.facebook.com/Cinnamon-Bun-Cafe-101779614973918/)

D6 9



Funny Honey



Beekeeper owned and operated!

We are a family owned and operated business and a member of the Australian Manuka Honey Association.

Pure Australian highest grade Manuka Honey 300+MGO to 1700+MGO tested and unprocessed, fresh local raw honey as well as Macadamia Honey, Ironbark, Leatherwood and Honeycomb honey available in store.

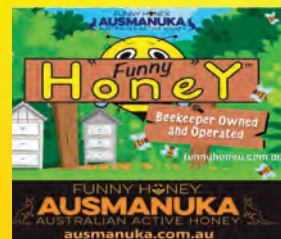
We love our customers!

📍 Shop B 159 Long Road, "Gallery Walk"

☎ 0414 844 995 📧 sales@funnyhoney.com.au

📘 [FunnyHoney.com.au](https://www.FunnyHoney.com.au)

D6 8





GALLERY WALK

MAIN STREET



Long Rd Collective

Long Rd Collective

"Something special for everyone!" – Linen Clothing for Men and Women, Jewellery, Bodycare, Books, Cards and gifts. Locally made pottery, Artisan baskets, homewares, Provence-style garden goods... and so much more! Open 7 days 10am–4pm

Shop 2, 117 Long Road, "Gallery Walk"

0407 114 644

www.instagram.com/longrdcollective



Crystal Mountain

Discover wonders of the Earth at Crystal Mountain. Explore our extensive collection of spectacular Gemstones, Crystals, Minerals, Meteorites, Fossils & Australian Designer Jewellery. Our expert Gemmologist guarantees authenticity & offers laboratory certification & identification services. Open 7 days, 10am–4 pm.

Shop A / 119 Long Road "Gallery Walk"

0411 568 153

CrystalMountain.com.au



Tamborine Mountain Distillery

Award-winning manufacturer of a wide range of Boutique Liqueurs and Spirits. The artisanal approach and multiple distillations, using an impressive range of natural ingredients and native flora, create smooth and unique flavours.

10 Macdonnell Road, Tamborine Mountain

(07) 5545 3452

instagram: tamborinemountaindistillery



The Glass Studio – Gallery Walk's only working glass studio... Glass artist Karen and other world-renowned local glass artists create unique "one of a kind" glass art pieces. We specialise in dichroic glass jewellery and all things glass. Now offering classes in cold, warm and hot glass mediums.

145 Long Road, "Gallery Walk"

0432 740 611 Open 364 days a year

GlassStudio.net.au



Angela's Pantry

We carry a wonderful selection of locally made jams, chutneys, oils, balsamics, dukkah, spices, honey, cheeses, timber pieces, pottery, ceramics, scented soaps & gifts... Something to suit all tastes!

Shop 3/136 Long Rd, (Gallery Walk)

Tamborine Mountain QLD 4272



Castle Glen Liqueurs

Cellar door for the award-winning "Castle Glen Australia". Stocking a huge range of Liqueurs, Wine, Fortified Wines and Ciders - all produced on-site at the Granite Belt QLD. Perfect for Cocktails and after dinner treats.

138 Long Road, "Gallery Walk"

07 5545 4282

www.castleglenaustralia.com.au



HINTERLAND ORGANICS

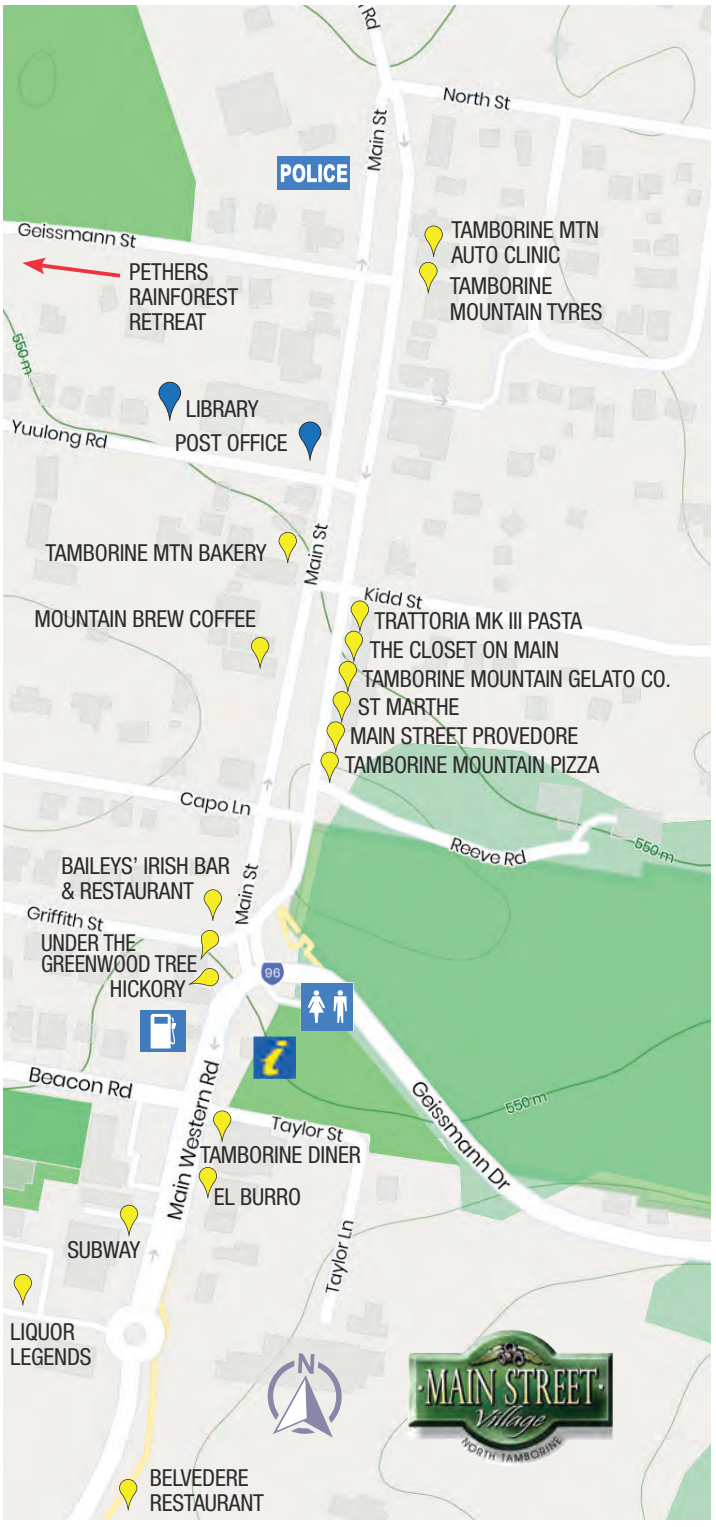
WELLNESS PRODUCTS, FOOD, BEVERAGE
SKINCARE, HAIR CARE, CLOTHING.

159 Long Rd Tamborine Mountain

GALLERY WALK



NORTH TAMBORINE VILLAGE



The Closet on Main

With an eclectic mix of stylish, comfortable and affordable clothing including some exclusive labels and carefully selected pre-loved clothing, a visit to the Closet on Main is a must. We also carry some unique giftware from local artisans to remind you of your visit.

Shop 3B/15 Main Street, Tamborine Mountain

0431 105 828

www.facebook.com/theclosetonmain



The Mountain Brew Coffee

Great Coffee, Great Vibes... Excellent tasting coffee made from the freshest premium beans and always served with a smile. We also offer yummy gourmet breakfast and lunch including daily Asian Specials. Try our delicious cakes! Open Mon-Sat 7am to 4pm and Sun and Public Holidays 7am to 3pm.

1/18 Main Street, Tamborine Mountain

(07) 5545 1186

www.themountainbrewco.com.au



Main St Provedore Eatery & Espresso

Specialty handcrafted pastry by day, sophisticated dining by night. Specialty products and fine food on Tamborine Mountain. Espresso and house-baked bread, deli-style sandwiches, luxurious salads. Exceptional five course dinners on Friday and Saturday evenings for up to 16 people in a relaxed setting.

Shop 1A, 11 Main St, Tamborine Mountain

0400 458 113 / 0424 125 500

www.mainstprovedore.com.au



Tamborine Mountain Gelato Co.

Small batch, authentic artisan gelato featuring seasonal and unique flavours that change regularly, with ingredients made from scratch in-house.

Wednesday 12pm–6pm

Thursday, Friday, Saturday 12pm–9pm Sunday 12pm–6pm

4/15-17 MAIN ST, TAMBORINE MOUNTAIN

hello@thegelatoco.com.au



Trattoria MKIII

LICENSED RESTAURANT

Classic Italo-Americana styled trattoria, bar & espresso.

WEDNESDAY TO SUNDAY 2PM TILL LATE

1A/15 MAIN STREET, TAMBORINE MOUNTAIN

(07) 5545 3795

tamborinemtpasta



Tamborine Diner

American Diner — 1950's Theme
Foot Long Hot Dogs and The Original American Hamburgers. Amazing DinaShakes with countless Toppings. Breakfast and Lunch
Dine-in, outdoor seating, in-store pickup

1/12 Main Western Road

07 5545 0406

instagram.com/Tamborine_Diner



Belvedere Restaurant

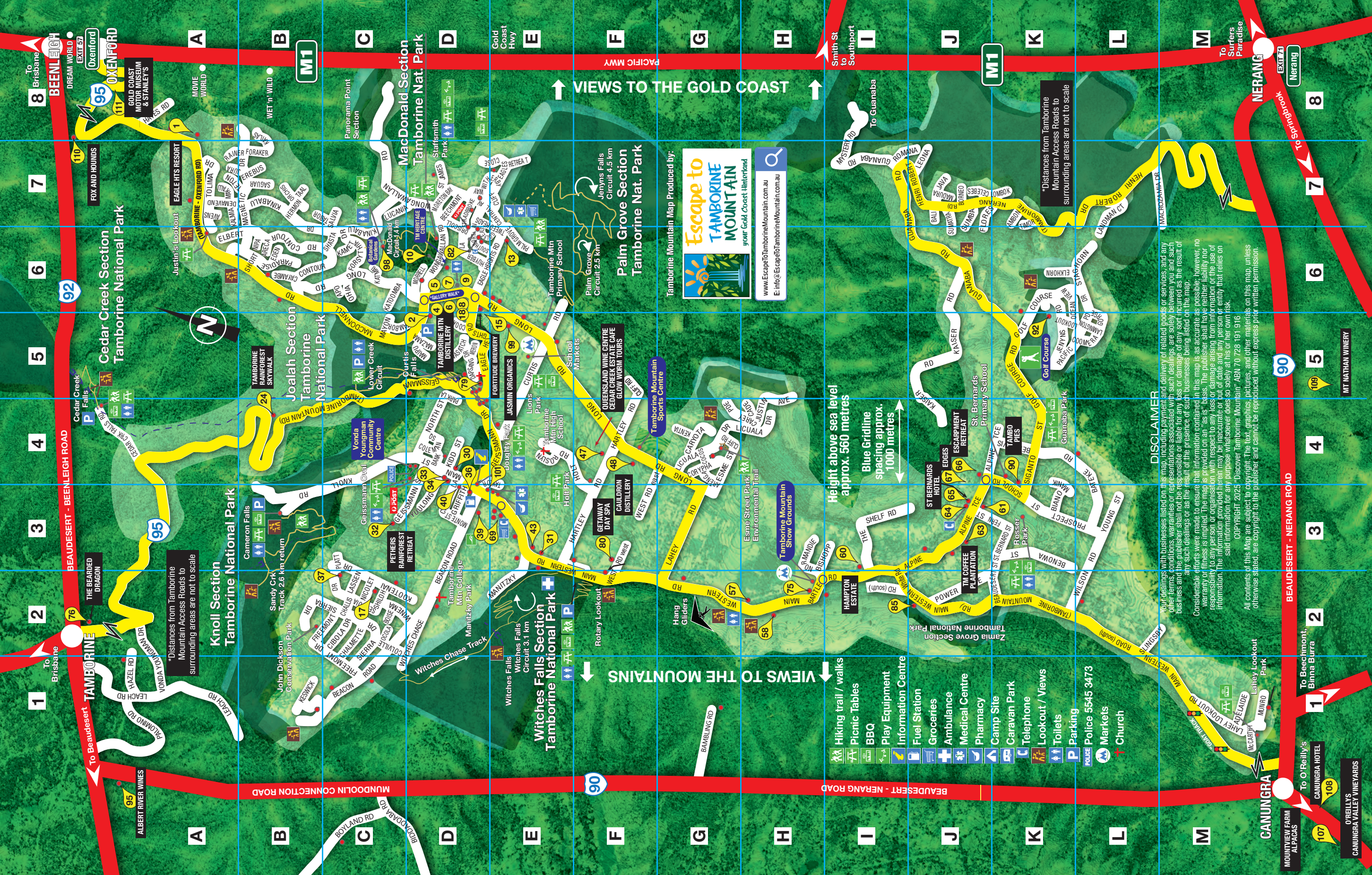
Authentic Italian Chef Mario from ROMA welcomes you... Open:
Tue to Sun Lunch: 11am–3pm – Fri + Sat + Sun Dinner: Tue – Sat (Closed Sunday) Home made pasta and wood-fired pizza. Traditional Italian menu at its best!

96 Main Western Rd, Tamborine Mountain

(07) 5545 4063

www.quandoo.com.au/place/belvedere-restaurant-on-main-86573







QUEENSLAND WINE CENTRE

📍 104 Hartley Road, Tamborine Mountain Qld 4272
 ☎ (07) 5545 1666 ✉ qwc@cedarcreekestate.com.au
 🌐 CedarCreekEstate.com.au

From bud burst to the bottle, our wines are a delight at any table. At the "Queensland Wine Centre" you will find the very best of Queensland's boutique wines. Our customer service is second to none, serving a unique range of the area to all nationalities visiting Tamborine Mountain.

Mon–Fri 10am–3pm, Saturday & Sundays 10am–4pm.



ALBERT RIVER WINERY & RESTAURANT

869 Mundoolun Connection Road, Tamborine QLD
 ☎ (07) 5543 6622 ✉ restaurant@albertriverwines.com.au
 🌐 AlbertRiverWines.com.au

Award winning wines and dining with a view... Enjoy a sumptuous lunch with Quality Estate Wines on our Verandah Restaurant overlooking picturesque Tamborine Mountain. Cellar Door open 7 days a week. Restaurant open Wednesday to Sunday for lunch.



FORTITUDE BREWING CO.

165-185 Long Road "Gallery Walk"
 ☎ (07) 5545 4273 🌐 FortitudeBrewing.com.au
GREAT FOOD – LIVE MUSIC ON WEEKENDS
– PRIVATE FUNCTIONS –
 Please check our website for Opening Hours



SIP AWARD-WINNING SPIRITS WITH STUNNING VIEWS

At 525m above sea level, Cauldron Distillery is Tamborine Mountain's premier destination for award-winning gin, whisky and vermouth.

Take in sweeping mountain and vineyard views as you enjoy premium cocktails, charcuterie platters, tasting paddles and delicious casual fare.

Live music every weekend, relaxed vibes, distillery tours, and hands-on gin-making classes. We are also kid and pet friendly.

Unwind. Explore. Taste the Spirit of the Mountain.

89-123 HARTLEY ROAD, TAMBORINE MOUNTAIN
(07) 5545 0156

CAULDRONDISTILLERY.COM.AU



THINGS TO DO

Tamborine Mountain Botanic Gardens

Wander through 11 hectares of curated gardens featuring exotic flora, a tranquil Japanese garden, and a serene lake—perfect for picnics, leisurely walks, and seasonal floral displays.

Tamborine Mountain Heritage Centre

Step back in time at this historic village showcasing early settler life with restored buildings, vintage artifacts, and interactive exhibits, offering a glimpse into the mountain's rich heritage.

TAMBORINE MOUNTAIN REGIONAL BOTANIC GARDENS



A must-see experience on any visit to the region. The Botanic Gardens combine a colourful and diverse range of exotic and native flora. The Gardens include a glorious lake as the centrepiece, a tranquil Japanese garden, a tropical rainforest walk and many other delights. Bring a picnic, bring the children, take a stroll along the many walks.

📍 25 Forsythia Dr, Tamborine Mountain
✉ manager@tmbotanicgardens.org.au
🌐 tmbotanicgardens.org.au



TAMBORINE MOUNTAIN HERITAGE CENTRE

53 Wongawallan Road, Tamborine Mountain Qld 4272

☎ (07) 5545 4010 ✉ tmheritagecentre@gmail.com 🌐 TMHeritageCentre.com.au

Come and see the real thing! The Pioneer History Museum displays examples of the various industries which have been carried out on the mountain from timber getting to farming. Open 10am to 3pm Saturdays, Sundays and Holidays.



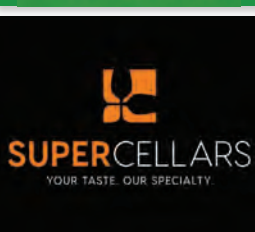
BOTTLE SHOPS



Liquor Legends Bottle Shop

Quench your thirst
Large range of beer and spirits
Fine wine cellar

📍 IGA Centre, 17 Main Western Rd
Tamborine Mountain
☎ (07) 5545 3370
🌐 stbernardshotel.com



Eagle Heights Super Cellars

Your local independent bottle shop stocked with a fantastic range of Beer, Wine, Spirits and More. Friendly staff with a focus on customer service. Open 10am – 7pm daily.

📍 17 Southport Ave, Tamborine Mountain
☎ (07) 5545 4883
🌐 EagleHeightsHotel.com.au



ACCOMMODATION



Explore the endless variety of accommodation on Tamborine Mountain – quiet mountain motels, elegant resorts, secluded rainforest retreats, a range of magnificent bed and breakfasts and romantic cottages, often with spa baths, log fires, and breathtaking views invite you to relax, unwind and refresh!

Edges at St Bernards Falls



edges
at st bernards falls

Situated at the edge of the escarpment and next to St Bernards Falls, "edges" provides the ultimate holiday experience. Edges lodge exudes lifestyle and relaxation with spacious living areas comprising kitchen, dining and lounge areas, elegant fireplace and cathedral ceilings and extensive views into the Guanaba valley and beyond to the Gold Coast.



📍 105 Alpine Terrace, Tamborine Mountain
☎ 07 5545 3622 🌐 www.edges.com.au



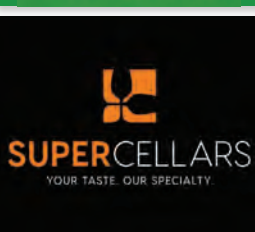
BOTTLE SHOPS



Liquor Legends Bottle Shop

Quench your thirst
Large range of beer and spirits
Fine wine cellar

📍 IGA Centre, 17 Main Western Rd
Tamborine Mountain
☎ (07) 5545 3370
🌐 stbernardshotel.com



Eagle Heights Super Cellars

Your local independent bottle shop stocked with a fantastic range of Beer, Wine, Spirits and More. Friendly staff with a focus on customer service. Open 10am – 7pm daily.

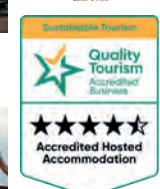
📍 17 Southport Ave, Tamborine Mountain
☎ (07) 5545 4883
🌐 EagleHeightsHotel.com.au



The Polish Place Cottages

Self-Contained Cottage Accommodation on Tamborine Mountain. Stunning sunsets, woodlog fireplace, double spa in your lounge, and late midday checkout!

📍 333 Main Western Rd, Tamborine Mtn
☎ (07) 5545 1603
🌐 PolishPlace.com.au



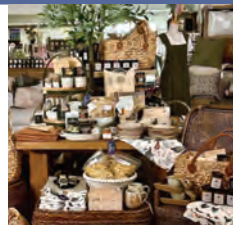


CANUNGRA TOWN CENTRE



My Country Escape – Relax, browse, stay a while – Authentic country-style homewares, timeless women's fashion & thoughtfully curated gifts. Enjoy genuine service with a warm, local touch.

🕒 **Open:** Mon to Fri 9am–5pm | Sat to Sun 9am–3pm
 📍 29 Christie Street, Canungra
 ☎ 07 5543 4042
 🌐 mycountryscape.com.au



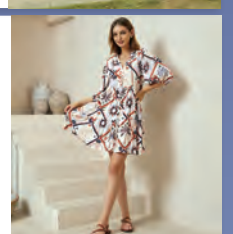
The Shoe Vault – A wonderful range of ladies and men's fashion shoes from Spain, Portugal, Brazil and Italy, we also stock orthotic comfort shoes and everyday walking shoes. To go with your new shoes, we have *Kompernero* handbags and *Adorne* jewellery.

🕒 **Open:** Mon to Fri 9am–4pm | Sat to Sun 8.30am–3pm
 📍 35 Christie Street, Canungra
 ☎ 0400 477 818
 🌐 theshoevaultcanungra.com.au



Louie & Opsie – our new boutique carries an exceptional range of ladies clothing: brands include *Worthier Treads*, *Adorne*, *Iris Maxi*, *Caroline Morgan*, *Cielo Di Milano* & many others. We strive to keep our prices at the very lowest so customers receive value for money. **Louie & Opsie** also carries a splendid range of leather handbags and jewellery to complement the street-smart look. **Open seven days**

📍 35 Christie Street, Canungra ☎ 0400 477 818
 🌐 theshoevaultcanungra.com.au



Bean In Café – Serves up country vibes, wholesome food, and smooth, consistent coffee – a local gem where everything is made with heart and the atmosphere feels like home. Voted best café in 4275 postcode in late 2024. Follow us on socials to keep updated on our in-house made goodies.

📍 6/40 Christie Street, Canungra
 ☎ 0482 423 311



WILDEWOOD TATTOO STUDIO

Wildewood Tattoo Studio blends artistic passion with serene hinterland vibes, crafting bold, bespoke tattoos in a welcoming, nature-inspired space where every inked story is uniquely yours. Visit us
 Shop 2, 40–42 Christie St, Canungra



Relax and Glow at Canungra Beauty!
 Facials, massage, waxing, brows, skincare & cosmetic treatments.

📍 Shop 1/38 Christie St, Canungra
 ☎ (07) 5543 4094
 🌐 www.canungrabeauty.com.au



CANUNGRA HOTEL

Cold beer, great food, good friends

📍 18 Kidston Street, Canungra QLD 4275
 ☎ (07) 55435 233
 ✉ administration@canungrahotel.com.au
 🌐 <https://www.canungrahotel.com.au/>



Vintage to new books,
 Gifts, pre-loved clothing
 6 Kidston St, Canungra 0418 792161
 📱 [canungrabooksandart](https://www.canungrabooksandart.com.au)

Coffee, Breakfast & Lunch,
 Pizza, Bike Hire & Picnic
 Hampers. Open 7 days

8 Kidston St
 Canungra

ELEKTRIC SOUL

Ph: 07 5609 3003



MARKETS



Tamborine Mountain Country Markets

A vibrant market offering fresh fruit and veg, local cheeses, plants, herbs, flowers, coffee, arts and crafts, clothing, and homemade treats. Food stalls sell poffertjes, German sausages (try the Knackwurst!), baked potatoes, and corn on the cob. Kids can enjoy pony rides, car rides, and a jumping castle, while adults relax to live music on the gazebo stage. Shady trees offer summer coolness, and sunny spots warm you on cooler days. Parking is available on Main Western Road and in the showground off Normandie Court, managed by SES volunteers. It's a refreshing day out in Tamborine's cool mountain air.

☎ 0417 618 379

H2
MAP REF

Second Sunday of each month - 8am to 3pm at the Tamborine Mountain Showgrounds Cnr Main Western & Bartle Rd.

Tamborine Mountain School Ground Markets

These community markets support the local State Primary School and mix country market charm with flea-market variety. Local sellers offer household items, kitchenware, clothes, toys, books, tools, furniture, and quirky bric-a-brac. Also available: fresh produce, plants, eggs, nuts, soaps, cookies, juices, and coffee. Perfect for treasure hunting, produce shopping, and enjoying a relaxed mountain morning.

☎ 0402 527 241

Last Sunday of each month - 8am to 2pm at the corner of Long and Curtis Road.

E5
MAP REF

Local Producers' Market

A weekly source for fresh, mostly organic fruit and veg, along with honey, herbs, nuts, flowers, plants, juices, and preserves. Produce is seasonal and largely grown on small farms across Tamborine Mountain, including avocados, kiwi fruit, rhubarb, and more. These markets reflect the area's green, agricultural heart — a major draw for returning visitors.

✉ info@greenshed.com.au | 🌐 www.greenshed.com.au

Every Sunday morning - 6.30am - 12pm.

**Next to the Tamborine Mountain Showgrounds
378-382 Main Western Road**

H2
MAP REF

WEDDINGS



Look no further than Tamborine Mountain for a truly exceptional wedding destination – magical gardens, comfortable accommodation, stunning reception venues, friendly local businesses to help you create your special wedding day.



Photo: Andy Williams

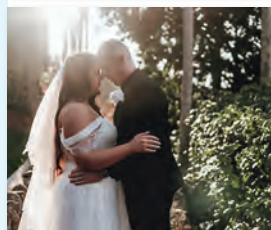


Cedar Creek Estate Winery Weddings

Cedar Creek Estate offers a beautiful sandstone Chapel as well as a Garden Arbor ceremony area, both overlooking Wild Duck Lake, with endless photo opportunities to capture your special day.

📍 104 Hartley Rd, Tamborine Mountain
☎ 07 5545 1666
✉ www.starlightweddings.com.au

F4
47

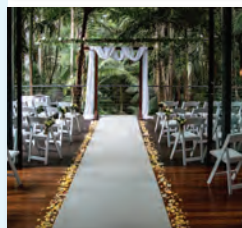


St Bernards Hotel

Say "I do" in the breathtaking beauty of St Bernard's Hotel, where romance meets the rainforest.

📍 101 Alpine Terrace, Tamborine Mountain QLD
☎ (07) 5545 1177
✉ weddings@stbernardshotel.com.au
🌐 stbernardshotel.com.au

J3
65



Pethers Rainforest Retreat

Spectacular boutique wedding venue situated on 5 hectares of secluded, sub-tropical rainforest. Wedding packages are all-inclusive and utterly exclusive, from intimate celebrations through to grand affairs of 80 guests. The rainforest canopy offers a spectacular view that your guests won't forget.

📍 28b Geissmann Street, Tamborine Mountain
☎ 07 5545 4577 🌐 pethers.com.au
✉ weddings@pethersrainforestretreat.com

C3
32



BEARDED DRAGON HOTEL

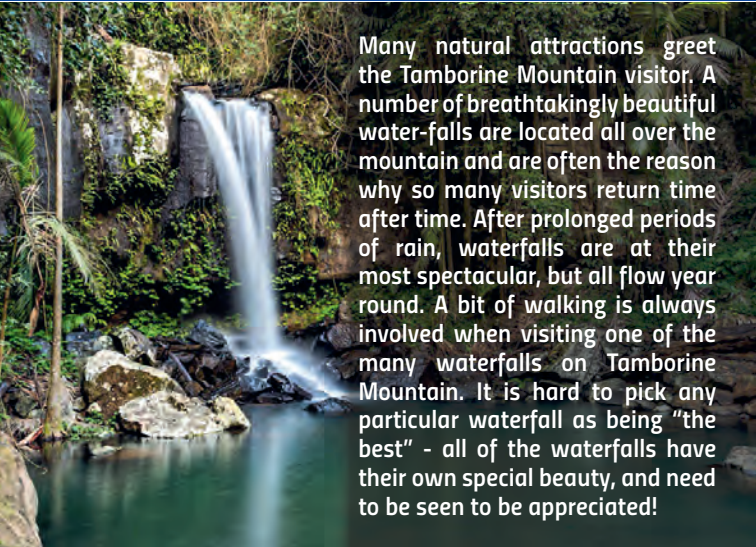
FOOD SERVED ALL DAY EVERY DAY!

★ Open from Breakfast till Late ★

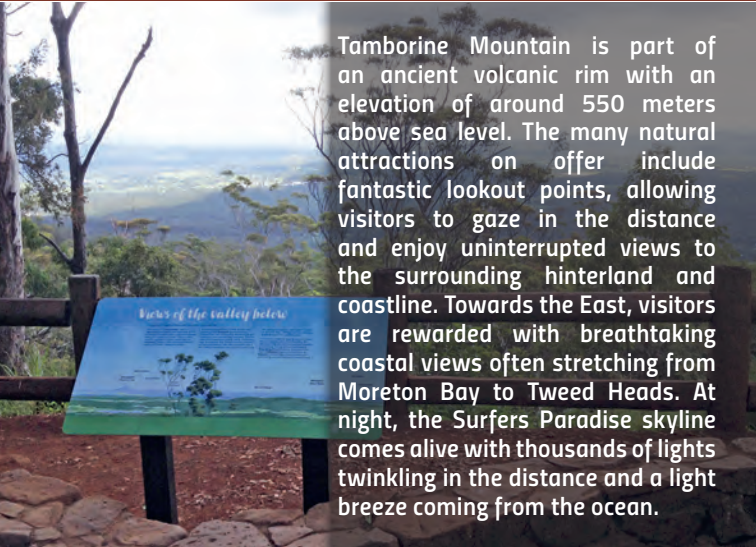
Casual Dining • Chef's Blackboard • Dine in or Takeaway
• Weddings • Functions • Corporate Events •
Accommodation • Room Service • Bottleshop
• Meet our Miniature Donkeys & Alpacas •

2-22 TAMBORINE MOUNTAIN RD, TAMBORINE
Order Takeaway 📞 07 5545 4577 🌐 @beardedragonhotel
www.beardedragon.com.au

A2
76



Many natural attractions greet the Tamborine Mountain visitor. A number of breathtakingly beautiful waterfalls are located all over the mountain and are often the reason why so many visitors return time after time. After prolonged periods of rain, waterfalls are at their most spectacular, but all flow year round. A bit of walking is always involved when visiting one of the many waterfalls on Tamborine Mountain. It is hard to pick any particular waterfall as being "the best" - all of the waterfalls have their own special beauty, and need to be seen to be appreciated!



Tamborine Mountain is part of an ancient volcanic rim with an elevation of around 550 meters above sea level. The many natural attractions on offer include fantastic lookout points, allowing visitors to gaze in the distance and enjoy uninterrupted views to the surrounding hinterland and coastline. Towards the East, visitors are rewarded with breathtaking coastal views often stretching from Moreton Bay to Tweed Heads. At night, the Surfers Paradise skyline comes alive with thousands of lights twinkling in the distance and a light breeze coming from the ocean.

D5 **"Curtis Falls"** Located in the heart of beautiful Tamborine Mountain, "Curtis Falls" is the only waterfall that can be viewed from the bottom. Being fed by a permanent creek, the falls run all year round. The walking track ends at a viewing platform overlooking a large rock pool, with great views of the falls and the surrounding columnar basalt rock face.

A5 **"Cedar Creek Falls"** A short stroll from the car park at the end of "Cedar Creek Falls Road" provides access to Cedar Creek and some of its spectacular cascades, waterfalls and rock pools. Visitors pass a couple of rewarding lookouts and descend down into the open canyon via a sealed pathway. As Tamborine Mountain is not connected to town water, these are the only swimming holes on the mountain. Please observe all regulatory notices.

B3 **"Cameron Falls"** The top of the falls is reached after a very enjoyable 30 minute walk starting at the "Knoll Road" lookout. A secure concrete bridge crosses "Sandy Creek", a viewing platform a few metres to the west offers great views inland as well as looking onto "Cameron Falls" to the east.

E3 **"Witches Falls"** Being located within Queensland's first National Park, "Witches Falls" is one of the most popular waterfalls. Access is via the "Main Western Road" car parking area opposite "Hartley Road". Being located on the "Witches Chase" hiking track, the falls are best admired from the viewing platform which also offers great inland views.



INLAND LOOKOUTS

B3 **"Knoll Road"** - Also a great picnic spot, well maintained and easily accessible.

B2 **"Cameron Falls"** - 30 minute hike from "Knoll Road" lookout, views inland and onto the falls.

B1 **"Beacon Road"** - Quiet and less frequented at the very end of "Beacon Road".

E2 **"Witches Falls"** - 25 minute hike from "Main Western Road", views inland and onto the falls.

F2 **"Rotary Lookout"** - Easily reached by car, right on "Main Western Road", with seating and binoculars.

G2 **"Hang Gliders"** - Cleared escarpment section, popular hang glider launch site and top photography spot.

COASTAL VIEWS

A8 **"Eagle Heights Resort"** - Offering truly uninterrupted views, plenty of parking and open to anyone.

B8 **"Magnetic Drive"** - Views partly obstructed by trees, limited parking and large turning circle.

G4 **"Licuala Drive"** - Park at "Justin Avenue" and stroll back uphill, watch out for traffic.

J6 **"Guanaba Road"** - Take great care when parking and please consider residents' privacy.

K6 **"Golf Course Road"** - Great views just a short walk away from where cars can be parked.





BBQs / PARKS / PLAYGROUNDS



Culinary delights on Tamborine Mountain often mean enjoying a BBQ or picnic in one of the many parks and designated picnic areas. There are a huge number of quiet and secluded picnic areas, some sheltered, some with views, some with children's playgrounds, some with wood or electric BBQs. However you imagine your ideal picnic spot - you are bound to find it on Tamborine Mountain.

LEGEND



OPEN PICNIC
GROUNDS



SHELTERED PICNIC
GROUNDS



WOOD BBQ's



ELECTRIC / GAS
BBQ's



CHILDREN'S
PLAYGROUND



OTHER
FACILITIES



TOILETS



MAP
LOCATION

MAP GRID

PARK AREA FACILITIES

DESCRIPTION

A4

Cedar Creek Falls:

- near carpark



x4



x2



FLAT GRASSY AREA

- at boardwalk



x2



x2



x1



LARGE SHELTER /
FLAT GRASSY AREA

Located at the start of the walking trail to "Cedar Creek Falls", there are two distinctly separate picnic areas. The first one is closer to the car park and offers plenty of room and facilities. The second area is reached after approximately two hundred metres walk on a sealed path, just to the right of the beginning of the board walk that leads to the falls.

B3

The Knoll:



x5



x2



x2

OTHER
INFO

LARGE SHELTER / LOOKOUT / LOOKOUT / BENCH

Also a popular lookout, the picnic area at "The Knoll" is beautifully laid out and offers every possible facility including large picnic shelters, electric BBQs and plenty of parking. The "Sandy Creek" circuit walking trail incorporating "Cameron Falls" starts just left of the lookout.

C3

Geissmann Oval:



x8



x4



x2

OTHER
INFO

LARGE SHELTER / SOCCER FIELD / SKATE PARK

A popular area for sporting activities, Geissmann Oval is centrally located just off "Main Street" in North Tamborine. Heaps of picnic facilities and within walking distance of shops, the oval is good for families and larger groups wanting a bit of space away from traffic and noise.

D4

Doughty Park:



x2



x2



2 BENCHES

OTHER
INFO

2 BENCHES

This small park is located within the busy North Tamborine shopping precinct, just a few metres off "Main Western Road". It offers limited children's playground equipment and picnic facilities. Due to the proximity of traffic, children need to be supervised at all times. Here you will also find the Visitor Information Centre.

D7

Staffsmit Park:



x6



x3



x1



OTHER
INFO

DOG LEASH FREE AREA / EXERCISE EQUIPMENT / LARGE GRASSY AREA

Featuring the Mountain's largest children's playground (fully fenced and covered with shade cloth), this park offers great facilities such as a dog leash free area (also fully fenced) and a 7-station exercise track.

E5

Lions Park:



x6



x2



x3



OTHER
INFO

LARGE GRASSY AREA

Offering basic picnic facilities, the "Lions" Park has plenty of room for the kids to roam around. Large trees provide shade on hot days and cooking can be done on a number of wood-fired BBQ's.

K3

Rosser Park:



x3



x2



x1

OTHER
INFO

BENCH

Just across the road from the "St Bernards Shopping Village", this park is easily accessible and well visited, offering sheltered picnic settings and wood fired BBQ's.

K4

Guanaba Park:



x1



x2



x2



OTHER
INFO

BENCH

Just past the Golf Course on the left side of the road when heading up the mountain, "Guanaba Park" is a great area for kids with good playground equipment and space for games of all kinds.

M1

Lahey Lookout Park:



x1



x2

OTHER
INFO

HEX GAZEBO / TELECOM TOWER

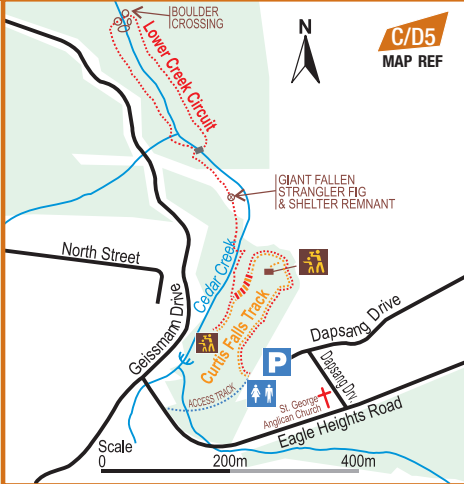
At the southernmost point of Tamborine Mountain this was once a very popular lookout area including a viewing tower to give early settlers advance warnings of approaching bush fires. With the tower now gone and trees obstructing the views, this small park is now a quiet picnic area, offering a variety of facilities.



WALKING TRACKS IN THE

TAMBORINE NATIONAL PARK

JOALAH SECTION



Access:

From both Eagle Heights Road via a 400m track and from Dapsang Drive.

DESCRIPTION



D5
MAP REF

CURTIS FALLS

1.5km return, moderate grade with some steeper sections, allow about 60 minutes.

D/C5
MAP REF

JOALAH CIRCUIT

4.2 km return, allow about 1 hour, moderate grade.

Instead of heading back from Curtis Falls, you can follow the piccabeen palm-fringed creek which starts at Curtis Falls to the beginning of the circuit, passing several smaller cascades. Starting the circuit walking left you will soon cross Cedar Creek. The track passes a clearing which was created by a fallen giant strangler fig. Walk the lower circuit in an anti-clockwise direction. Eventually you will reach an easy hop-over boulder creek crossing, and then the track returns left towards Curtis Falls.

CEDAR CREEK SECTION



Access:

This section of the park is easily reached via Tamborine Mountain Road. Heading up the mountain from Tamborine Village, the turn-off to "Cedar Creek Falls Road" is just past the information map stopping bay on the left, on the same sharp right bend as the turn-off to "Thunderbird Park".

DESCRIPTION



A5
MAP REF

CEDAR CREEK FALLS LOOKOUT

500m return to lookout, allow about 15 minutes, easy grade.

A5
MAP REF

CEDAR CREEK FALLS ROCK POOLS

900m return from lookout, allow about 30 minutes, moderate grade.

This track provides access to Cedar Creek and some of its spectacular cascades, waterfalls and rock pools. Walkers descend down through open forest and dry rainforest and arrive at these popular swimming holes after crossing extensive jumbled rock scree slopes just before the creek.

Access to the swimming holes is easy via slope rock shelves, care needs to be taken as these rocks can be slippery. Jumping from the cliffs is strictly prohibited, due to submerged rocks and other hazards. The water can be quiet cold, even in the peak of summer.

WITCHES FALLS SECTION



Access:

The start of the walking trail is easily accessible off "main Western Road". For the "Witches Chase Track" turn into Beacon Road at the local servo, further down keep left at the fork taking the aptly named road "Witches Chase". Car parking is at the start of the walk where the road turns sharply right to become Colville Drive.

DESCRIPTION



E2
MAP REF

WITCHES FALLS CIRCUIT

3.1 km, allow about 1 hour, moderate grade.

D1-2
MAP REF

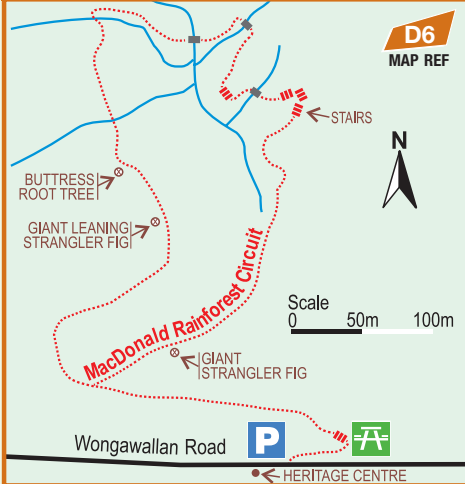
WITCHES CHASE TRACK

2.7 km return, moderate grade.

This walk also starts at "Main Western Road". It descends down the mountain using the northern track to the "Witches Falls" waterfall and lookout, and continues along the cliff through rainforest, passing a huge boulder field making for a slightly more challenging terrain towards Beacon Road. Once you passed the boulder field either turn around and head back, or keep following the track until you reach the car park at the end of "Witches Chase".



MACDONALD SECTION

**Access:**

Turn into "Wongawallan Rd" at the upper roundabout of "Gallery Walk", parking is about 200 metres down the road on the left opposite the "Heritage Centre".

This precious tract of subtropical rainforest was named after Miss Jessie MacDonald, who generously donated part of this area to become a National Park in 1933.

DESCRIPTION

**D6**
MAP REF**MACDONALD CIRCUIT**

1.4km return, allow 35 minutes, easy grade.

This relatively flat loop track passes through rainforest with towering strangler figs, beautiful Piccabeen Palm Groves and tall trees with vines and ferns. This walk is popular with bird watchers, and offers visitors a quiet rainforest walk away from street noise and crowds.

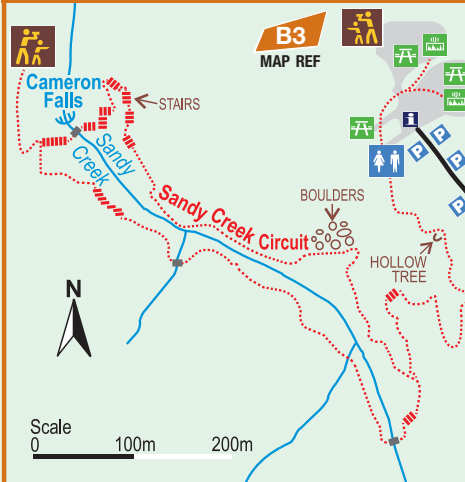
The circuit is easy to navigate and very enjoyable. It is suitable for all ages, and often offers cool relief in the warmer summer months.

For updates and a printable version of these maps go to:

EscapeToTamborineMountain.com.au



THE KNOLL SECTION

**Access:**

In North Tamborine, turn off "Main Western Road" into "Main Street", continue past the shops and the residential area where it becomes "Knoll Road", keep left when the road forks.

DESCRIPTION

**B3**
MAP REF**SANDY CREEK / CAMERON FALLS CIRCUIT**

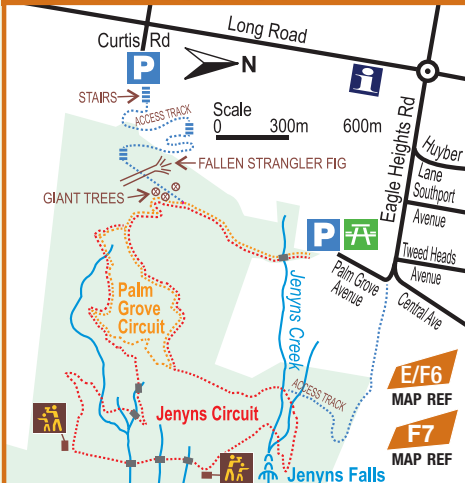
2.6 km return, allow 1 hour, easy grade.

The track descends from the car park to the creek level through transitional rainforest with large flooded gums and Piccabeen Groves. Large black skink lizards can often be seen sunning themselves on this track.

Turn right when reaching the Sandy Creek circuit, and follow the gently sloping track until the track turns sharply left, continuing along the cliff edge. You will soon reach the top of Cameron Falls via a concrete bridge crossing Sandy Creek, offering spectacular views to Mount Flinders and Brisbane.

A branch track to Cameron Falls Lookout just past the bridge enables you to truly appreciate the natural beauty of this waterfall. Complete the circuit by continuing right when returning from the branch track, crossing Sandy Creek shortly before reaching the uphill track back to the car parking area.

PALM GROVE SECTION

**Access:**

For ease of parking, use either "Palm Grove Road" or "Curtis Falls Road". Alternatively, this walking area can be reached by using an access track starting at the corner of Eagle Heights Road and Palm Grove Road.

DESCRIPTION

**E/F6**
MAP REF**PALM GROVE CIRCUIT**

2.5km return, allow 1 hour, easy grade.

Access via Curtis Road is recommended, as the access track itself offers many rewards to walkers such as giant strangler figs and amazing root formations. The track zigzags down the mountain before it flattens out to reach the beginning of the circuit. Pass peaceful palm groves and some fascinating fungi on the way.

F7
MAP REF**JENYNS CIRCUIT**

4.5km return, ALLOW 1½ hours, moderate grade.

Incorporating parts of the "Palm Grove Circuit", this circuit leads into drier eucalyptus forest. Hoop pines, brush box and grey gums abound and walkers will pass through a grove of ancient cycads. Watch for steep cliff edges and remain on the track at all times. Jenyns Falls and Burrawang Lookout tracks are currently closed.



GERMAN
CUCKOO CLOCK_{NEST}
GALLERY WALK
TAMBORINE MOUNTAIN



CLOCKS, WATCHES & REPAIRS

OPEN 7 DAYS • 10AM - 4PM

07) 5545 1334

WWW.CLOCKS.COM.AU